



## Laboratory Equipment Small Items & Consumables

# Core transportation boxes

These are constructed from tough polymeric material ensuring safe delivery of core from the rig-site to the laboratory. Suitable for core barrels of all diameters cut to 1 meter lengths.

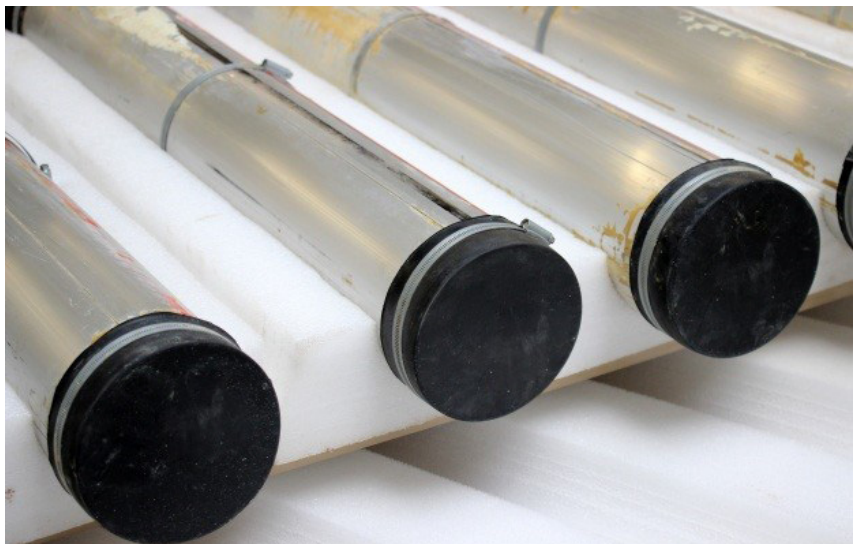
## Capacity:

- 20 core barrels - 4" diameter core (when utilising foam profiles).

## Options:

- Lockable lid
- Hinged lid

Supplied with purpose-made foam profiles to ensure core barrels are stable during transit. Available in various sizes to accommodate the different sizes of barrel used.





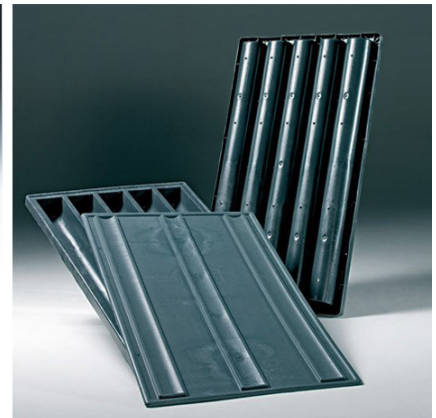
# Core boxes

Boxes are available for all sizes of core. The wooden (heat treated) boxes may be custom made to accommodate any core size.

Plastic, multi-compartmented boxes are also available. These are reinforced with transverse webs to provide greater strength and durability.

## Key Features:

- Equipped with specially shaped lids ensure easy and secure overlap between the same
- Customized on request.



# Core bags

Hermetically sealed aluminium bags used for packing of cores. The cores are loaded into the bags, sealed and a slight vacuum applied.

These may then be loaded into specially designed liners, which are over-pressured (3 bar) with a nitrogen atmosphere. This arrangement prevents oxygen intruding into the aluminium bags even after storage over a long period of time.



# Plug boxes

Cardboard plug boxes for 1" and 1.5" plugs.

## • 1" Plugs

The box is compartmentalised into 9 x 6 sections, each accommodating one 1" diameter plug of up to 45 mm long. Supplied with a separate lid.

## • 1.5" Plugs

The box is compartmentalised into 7 x 5 sections, each accommodating one 1.5" diameter plug of up to 75 mm long. Supplied with a separate lid.



# Drill bits

PanTerra drill bits can be used to obtain perfect plugs from all core material, be it unconsolidated, soft or hard sedimentary rock, shale, carbonates, etc. Also suitable for plugging with liquid nitrogen.

## Diameters available:

- 1"
- 1.5"
- 2"
- 30 mm
- Custom diameters are also available.

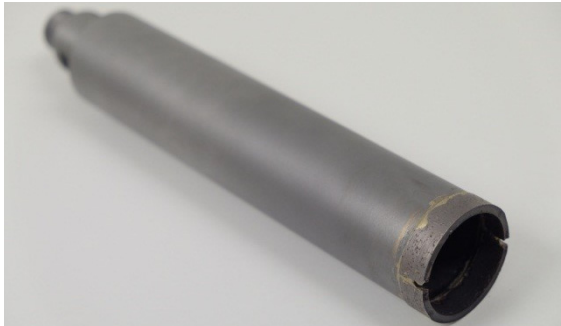
## Working length:

- Custom-made to customers' requirements

## Fittings:

- A variety of end-types are available ensuring compatibility with any core plugging machine.

Experience in PanTerra's core analysis laboratory has proven these drill bits longevity, making these a particularly economic option.



# Swivel

Multi-purpose stainless steel swivel suitable for all types of drilling fluids, up to and including liquid nitrogen.



# Accessories for liquid nitrogen plugging

All items required for liquid nitrogen plugging. Details available on request.

# Resination

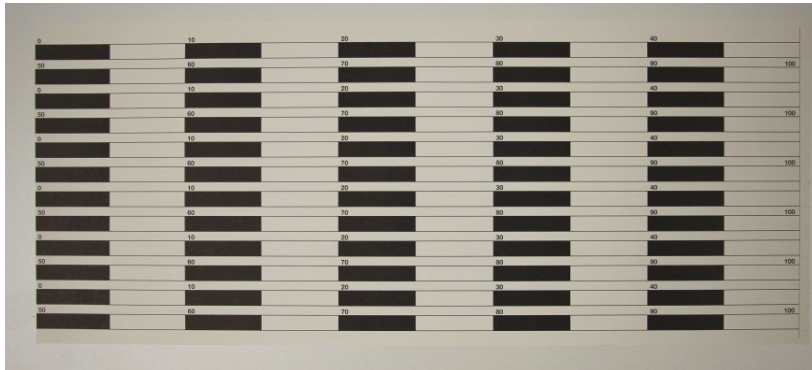
Resin and hardener selected to provide optimum results for resinated slabs. Available in 200 litre drums but also UN approved 11 litre drums suitable for air transportation.

Custom-made to PanTerra's specifications. Available in sizes to suit all core diameters.



## Resination Stickers

- Providing length scale, available in both metric and imperial dimensions

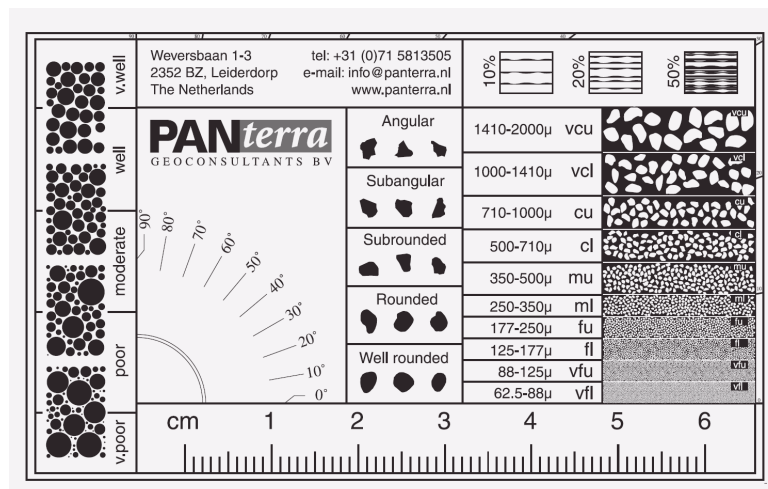


# Grain characterisation charts

A handy, economical and pocket-sized chart used by geologists to describe samples.

Chart consists of several measurements indicators including:

- Sphericity/roundness measuring chart
- Examples of well-sorted to very poorly-sorted grain samples
- 5 actual grain samples illustrating angular, subangular, subrounded, rounded and well-rounded shapes
- 10 grain size samples.

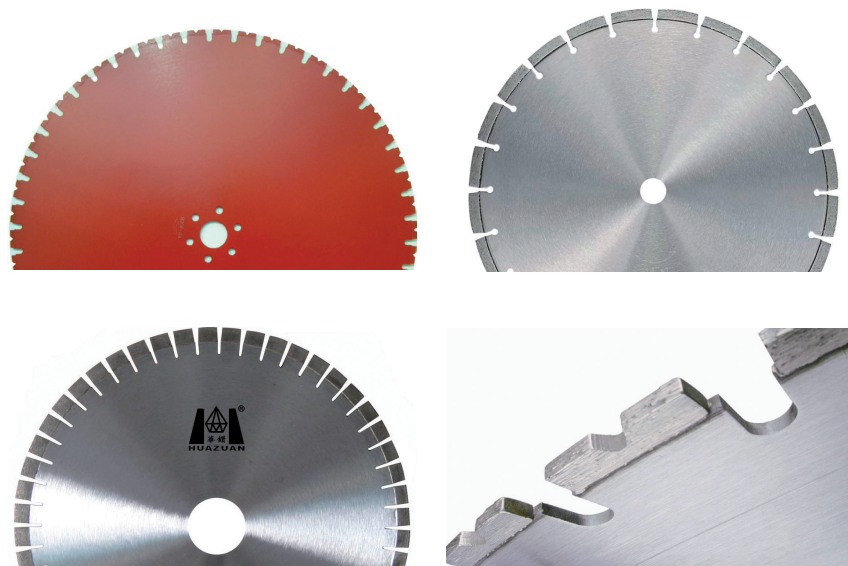


# Diamond core cutting materials

PanTerra supplies a wide variety of diamond impregnated drill bits and saw blades.

Standard drill bits have inner diameters of 30 mm, 1", 1.5" or 2" and connections of R1/2". Other drill bit sizes can be supplied upon request.

Saw blades are also available in a variety of sizes, patterns and thicknesses; ranging for example from very fine blades for cutting delicate samples like shales, to coarse blades for cutting hard rock material.





# Core preservation

## Consumables

- Strippable impermeable coating
- Aluminium foil
- Saran wrap



## Strippable plastic coating specifications

Appearance:	Translucent solid
Film thickness:	1.80 mm (at 130° C)
Characteristics:	Non-flammable
	Non-toxic
	Non-hazardous

# Porous Plates

For PcRI and de-saturation applications.

PanTerra supplies high quality alumina porous plates, manufactured to exacting standards to ensure:

- Maximum uniformity of pore size,
- Increased strength.

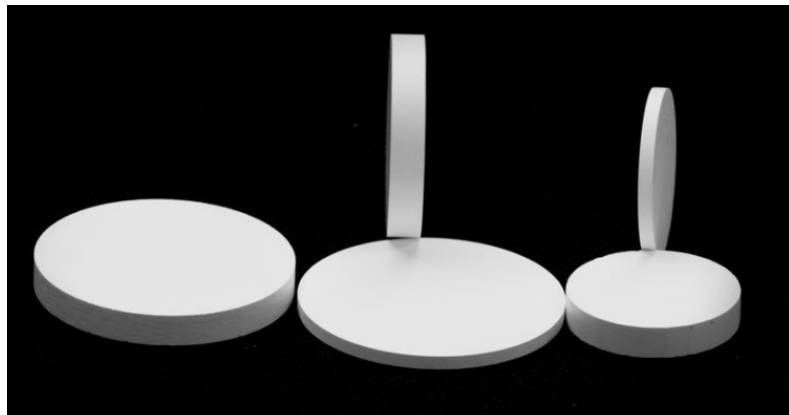
Having a very narrow pore size distribution ensures that premature break-through does not occur, i.e. at capillary pressures below the plates designated specification.

The robust nature of these plates minimises the occurrence of fractures being generated mid-test.

## Availability

Diameters:	1" and 1.5" are standardly available non-standard diameters can also be offered
Theoretical entry pressure:	275 psi 507 psi 835 psi

Both water wet and oil wet plates can be provided.



# Amott Cells

Conventional (i.e. ambient temperature) Amott cells are available with customisable measuring tubes to ensure the accuracy and capacity matches requirements for the samples to be tested.

- Suitable for 1.0" and 1.5" diameter plugs.
- Measuring tube range typically 10 ml – 40 ml



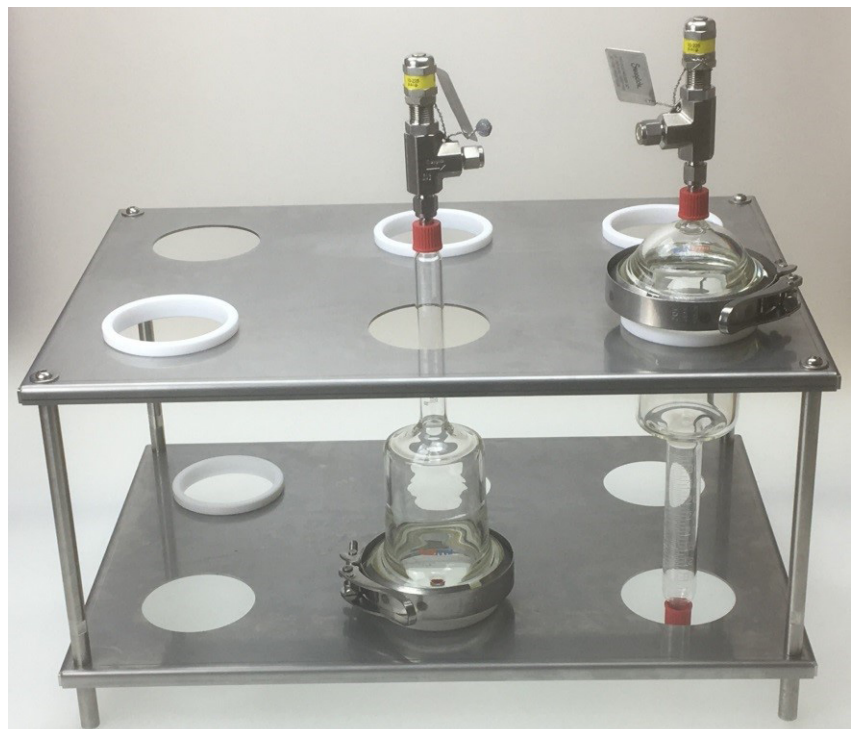
# HT Amott Cells

These Amott cells have been developed for high temperature applications, and are equipped with a pressure relief valve (PRV) to ensure safe operation.

As with the ambient cell the measuring tube is customisable in terms of capacity and graduations.

The PRV is set to 30 psi and a manufacturer's test report is provided.

Each type of Amott cell is suitable for both drainage and imbibition tests and custom-made stands are available.





# Additional Consumables

These include:

- Sandstone or carbonate plugs, up to 300mm long,
- Core holder sleeves, in nitrile or Viton,
- Heat shrink, for poorly consolidated or unconsolidated plugs,
- Chemicals and salts
- Conductive rubber – for ambient electrical properties measurements



PanTerra Geoconsultants BV • Weversbaan 1-3 • 2352 BZ Leiderdorp • the Netherlands • T +31 (0)71 581 35 05 • [info@panterra.nl](mailto:info@panterra.nl) • [www.panterra.nl](http://www.panterra.nl)

The product and service range of PanTerra's Equipment Sales Division is not limited to the items advertised within this catalogue.

For more detailed information either email your queries to [info@panterra.nl](mailto:info@panterra.nl) or phone PanTerra's Equipment Sales Division at +31 (0)71 581 35 05.

