

From data to solutions • Subsurface Evaluations • Laboratory Services • Recruitment Services

## Reservoir Characterisation

### Reservoir characterisation services:

- Core description
- SWS and cuttings evaluation
- Petrography
- Advanced diagenetic studies (fluid inclusions, stable isotopes)
- Borehole image log processing and interpretation
- Fracture analysis
- Integration with RCA and SCAL data, wireline logs and other well data
- Interpretation of sedimentological and diagenetic setting
- Stratigraphic correlation guidelines
- Analogue identification

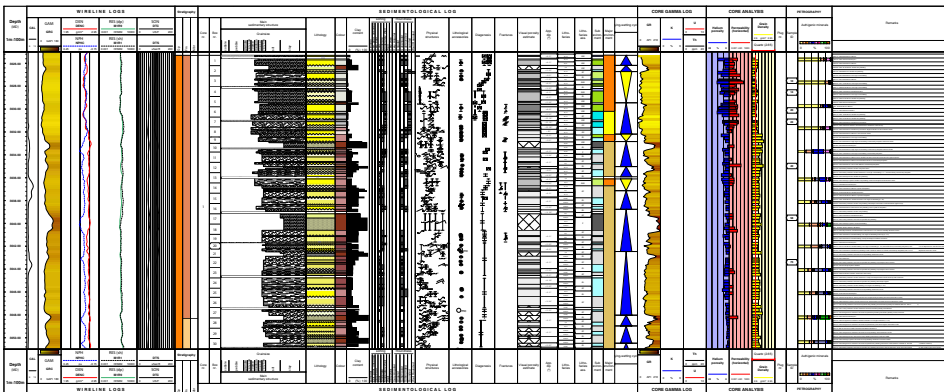
Reservoir characterisation underpins much of E&P decision-making and relies on well data such as cores and logs in combination with, for instance, seismic.

PanTerra reservoir characterisation group specialises in getting the most out of your valuable cores. We cover the whole spectrum of geological core evaluation: detailed description of the core, integration with logs and core analysis data, and interpretation in terms of stratigraphic, sedimentological, diagenetic or structural setting including identification of analogues and how this impacts on the 3D subsurface model. PanTerra also offers state-of-the-art borehole image log interpretation services, either in combination with core evaluations or on a stand-alone basis to characterise uncored wells.

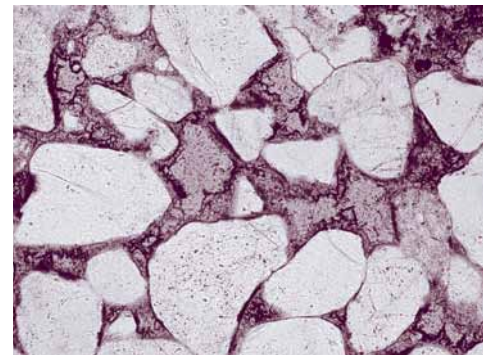


Microscope

PanTerra experience includes both clastic and carbonate reservoirs from the major sedimentary basins.



Core-log panel



Thin section

